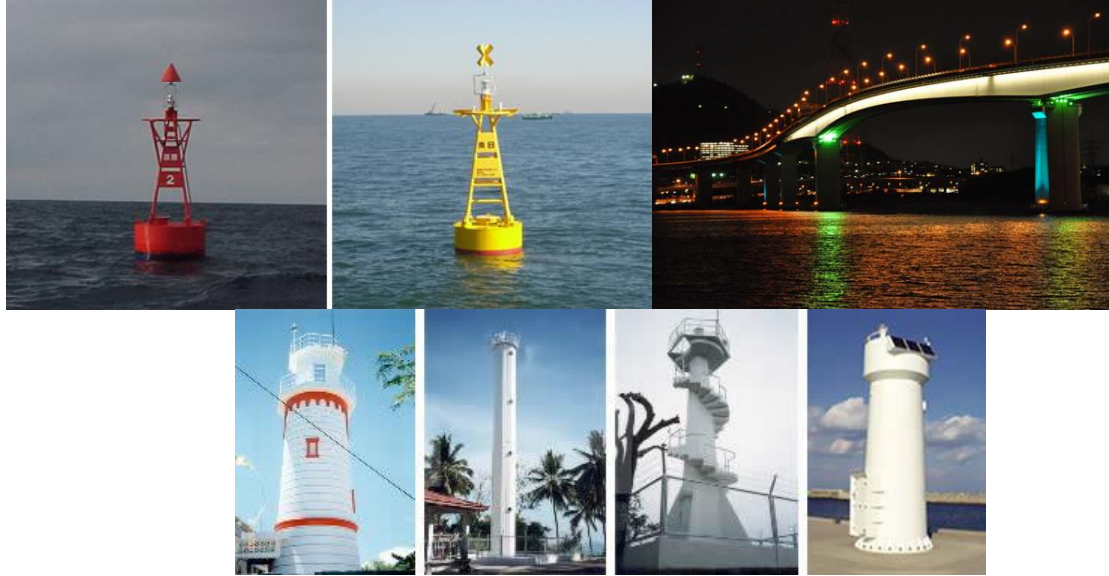


PROJECT OF ZENI LITE BUOY

Takashi Mizuno (project leader)

Chiori Onoue (project subleader)

ZENI LITE BUOY



<http://www.zenilite.co.jp/>

CONTENTS

1.Objective

2.Place and Time of
Research

3.Procedure

4.Hypothesis

5.Result and Discussion

– Place of Buoy

– Tuas Second Link

6.Conclusion

7.Proposal

Objective



Adjustment of
Place of the
Buoy

Finding New
Place of the
Buoy

Place and Time of Research

- Place

 - Johor Strait

 - Tuas Second Linc

} See from Raffles Marina

- Date

10/Mar/2015

- Hour

10:00 ~ 13:00

Tuas Second Linc

No Passage

Tuas Checkpoint

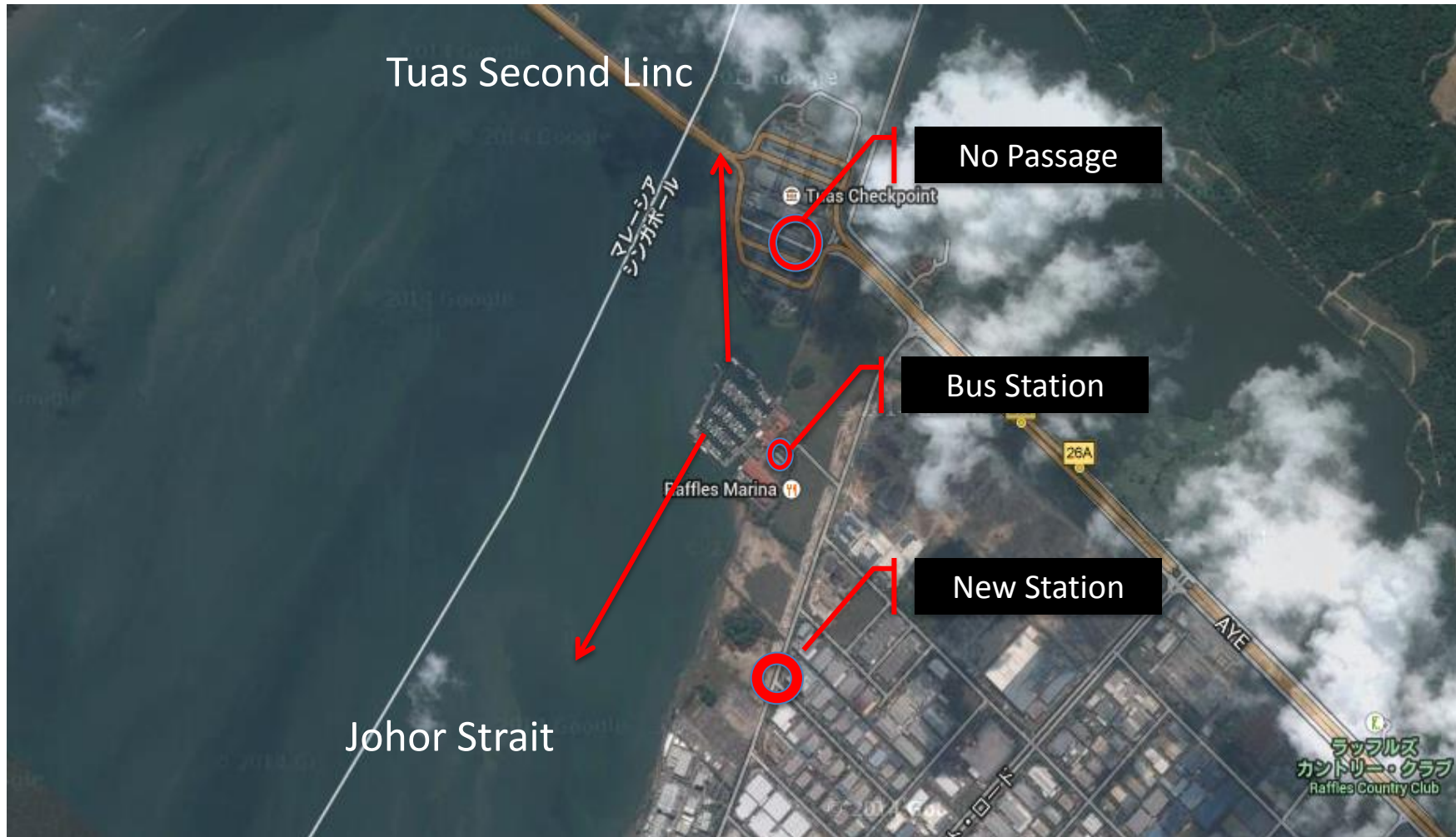
Bus Station

Raffles Marina

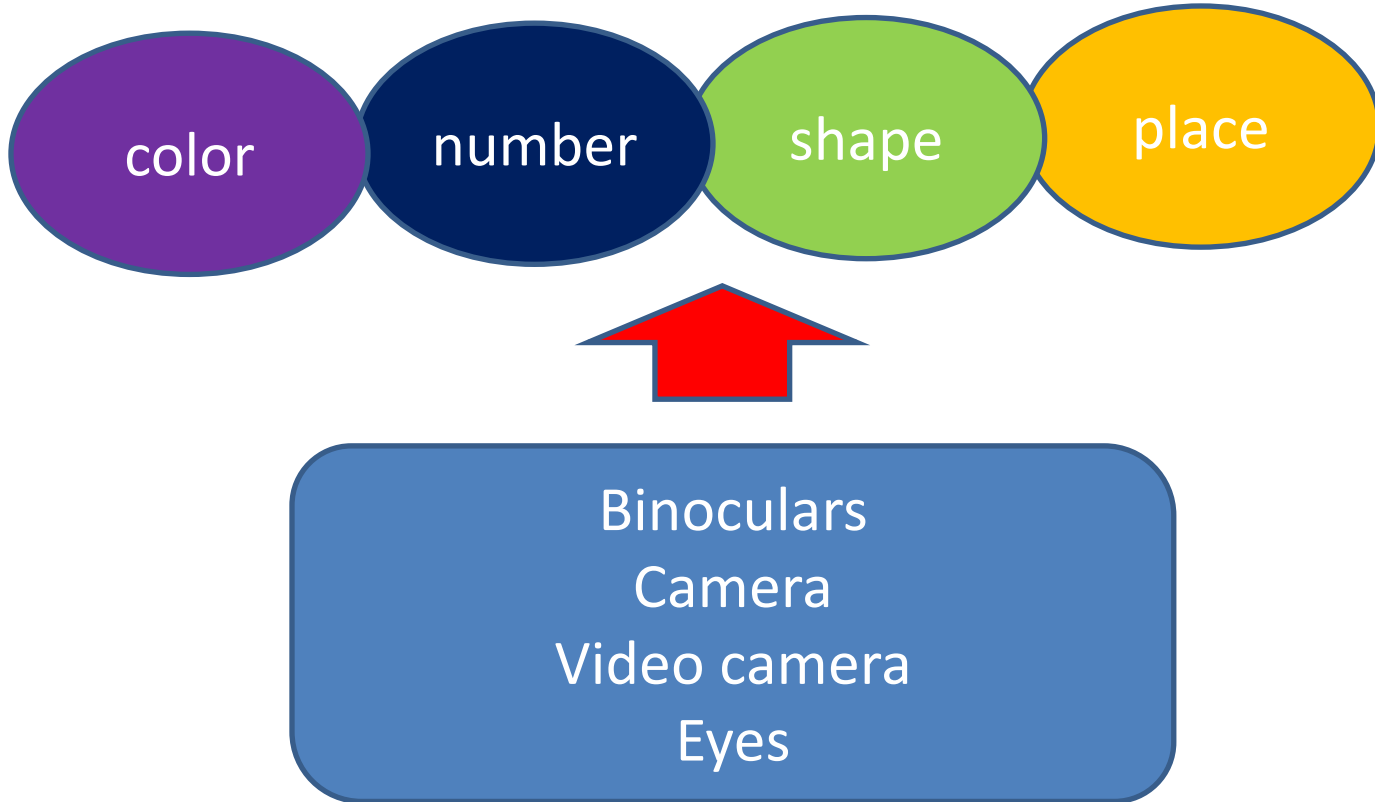
New Station

Johor Strait

ラッフルズ
カントリー・クラブ
Raffles Country Club



Procedure



Navigation Aid
Traffic services and
of Radio Signaling
& Service (VTS)
Reporting System

Submarine Pipelines
Submarine pipelines additional to those shown on this chart
may be located in the vicinity of the Singapore Strait
and the Johor Strait. The location of these pipelines is subject to change.

Entry Prohibited
No vessel or craft is to anchor, loiter or conduct any type
of fishing activity within the 12-nautical mile channel of
navigable waters adjacent to the SAFTI Line Firing Area.

Navigation Aid
Traffic services and
of Radio Signaling
& Service (VTS)
Reporting System

②Tuas Second Linc(国境の橋)

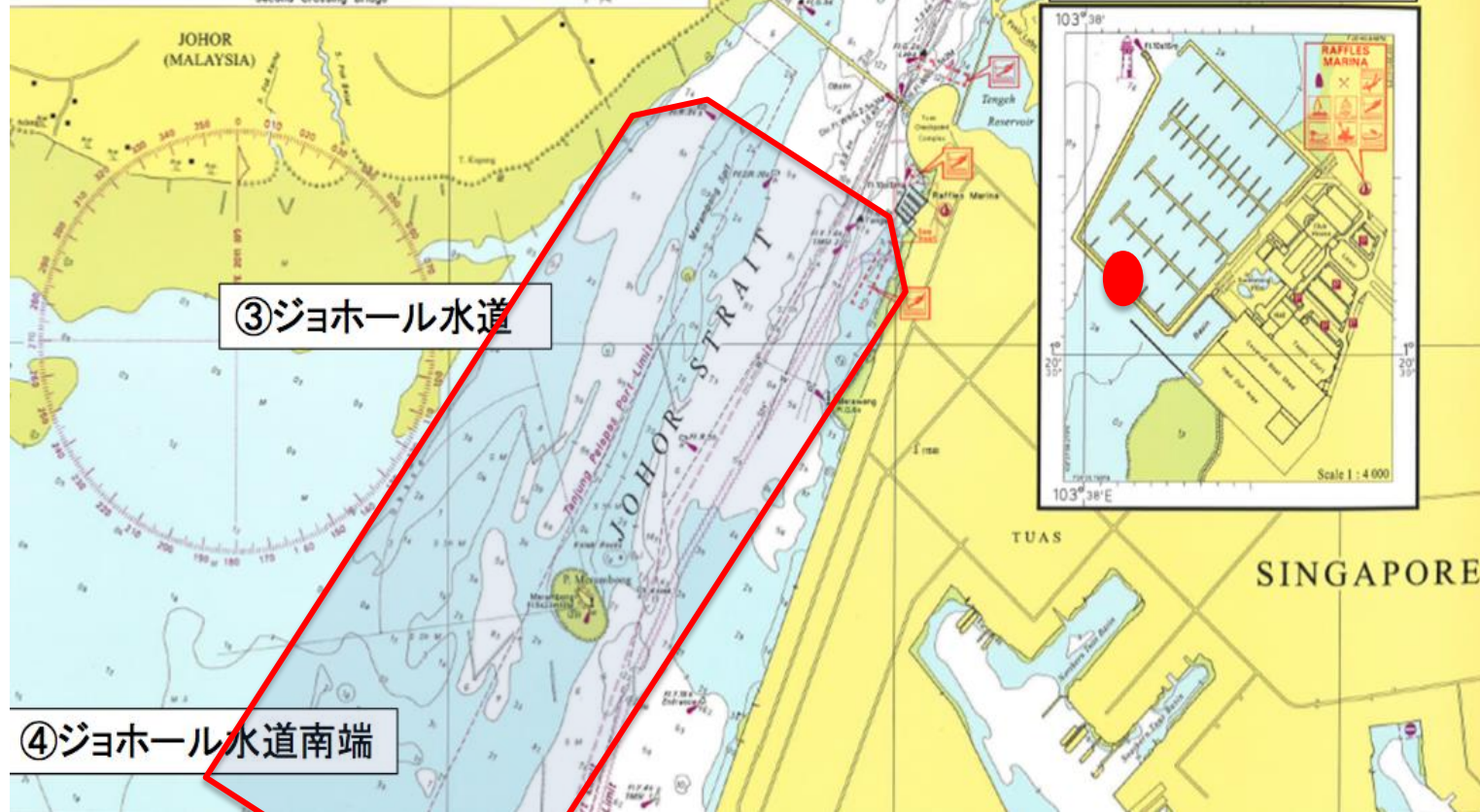


①ラッフルズマリーナ



③ジョホール水道

④ジョホール水道南端



Hypothesis

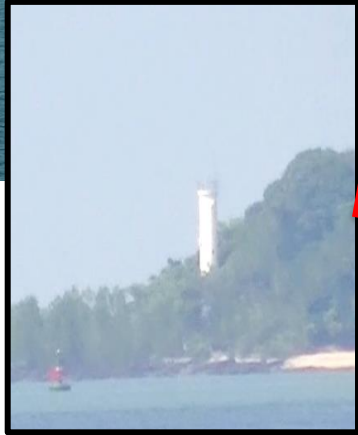
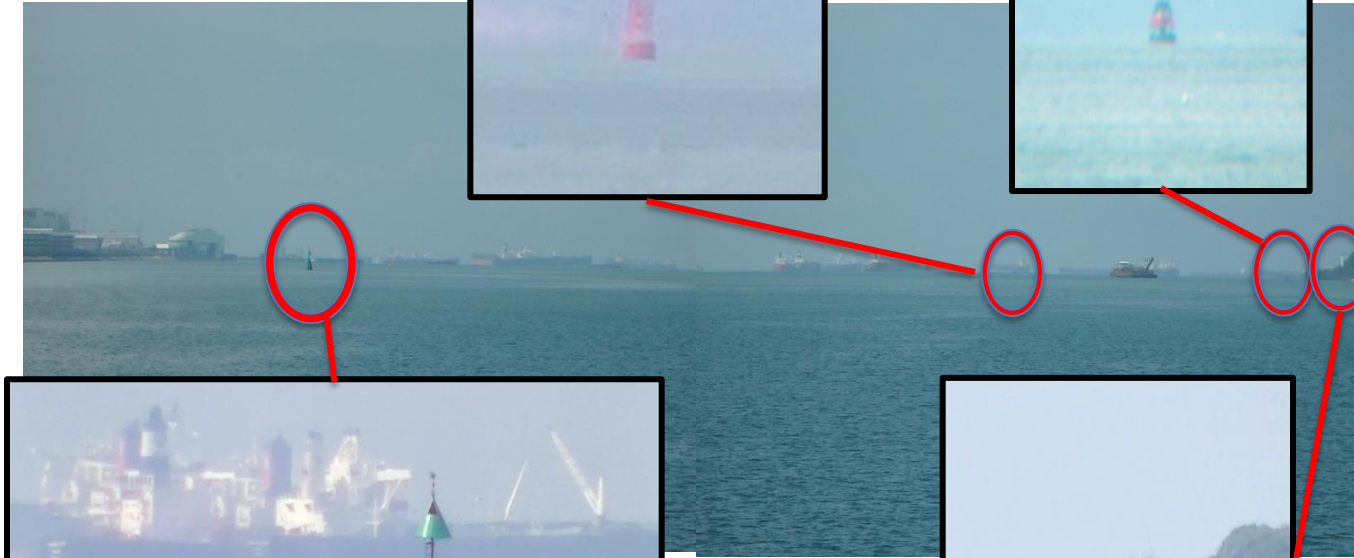
- A lot of buoy are placed
 - Separate the area of leisure and another area

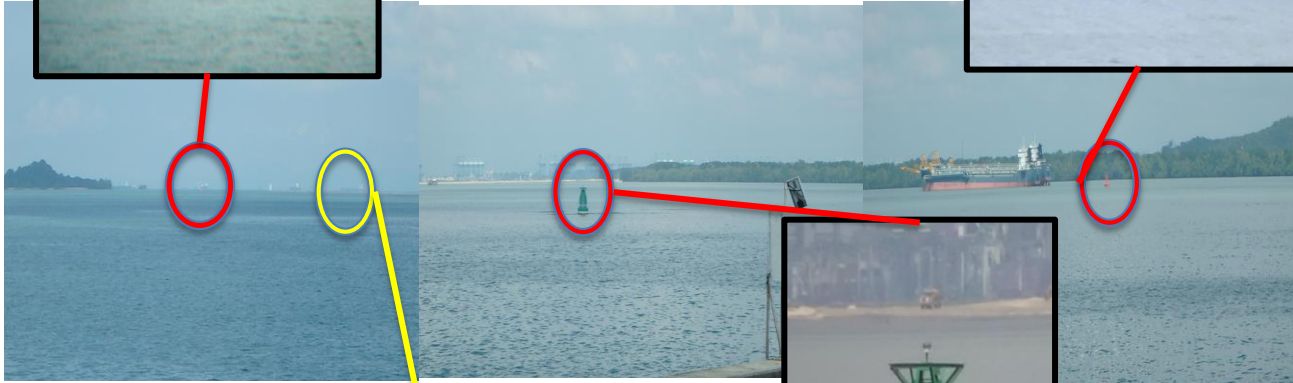
Result and Discussion

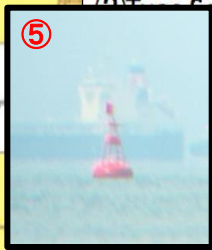
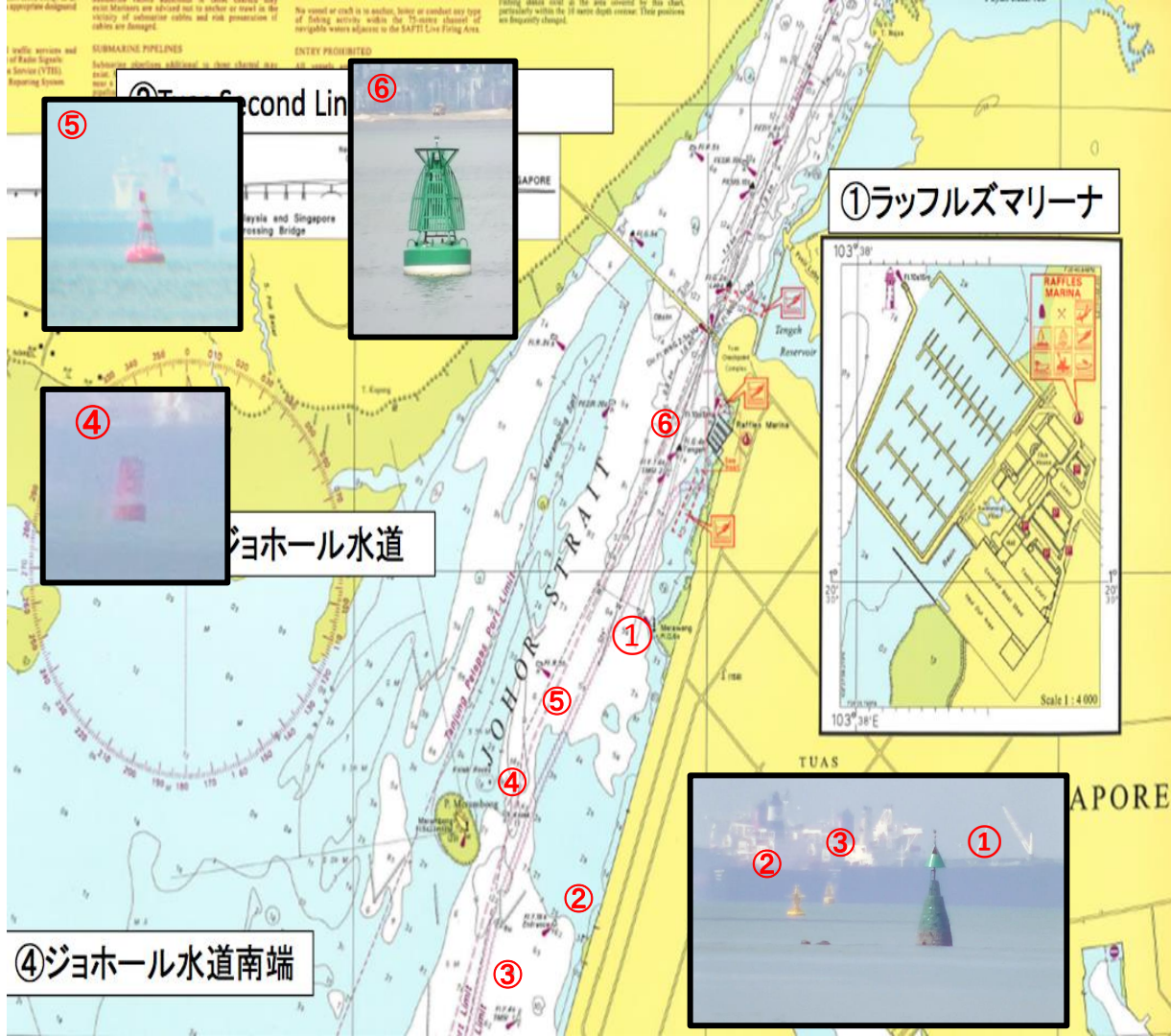
5 Buoys

3 Buoys







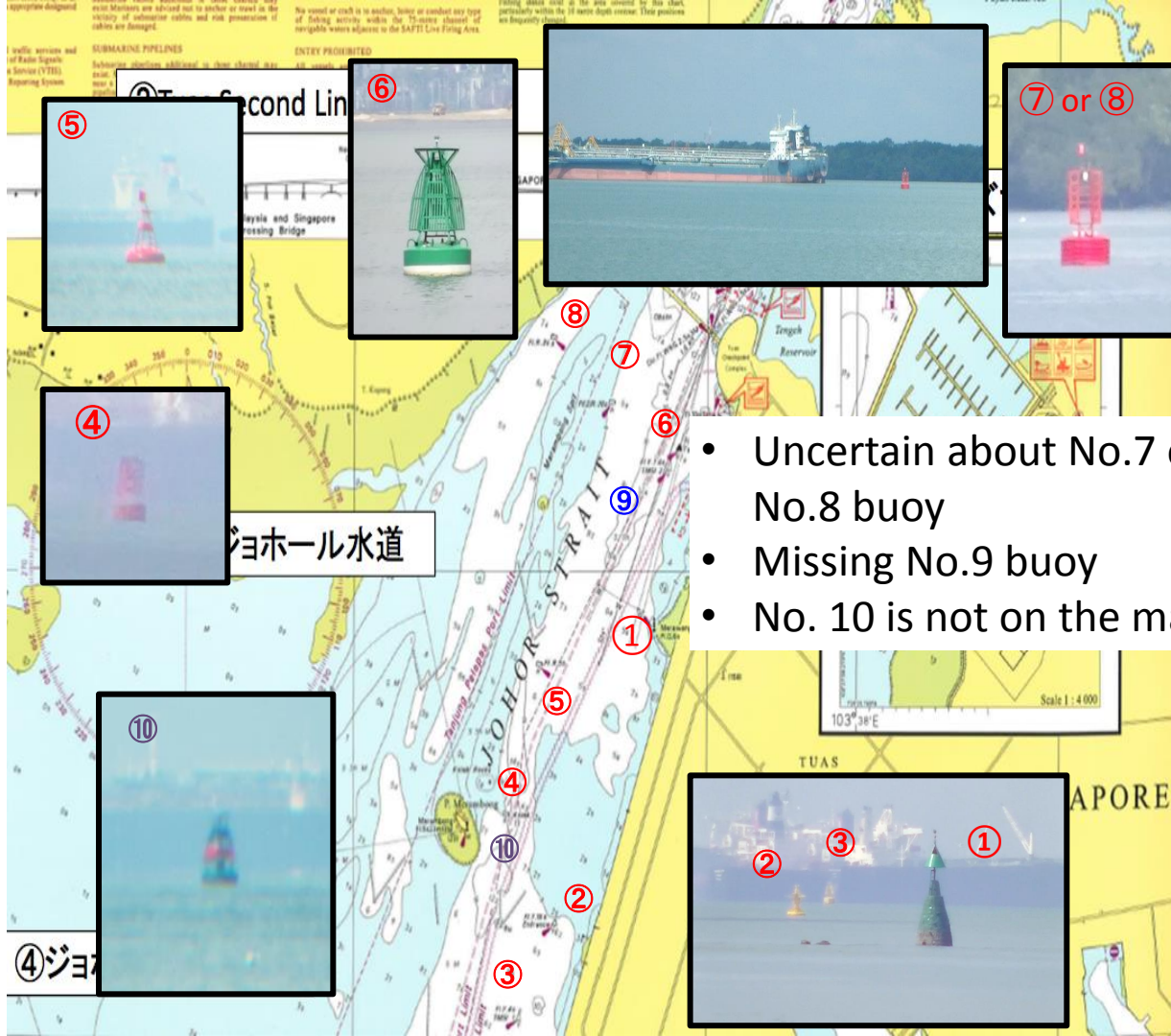


①ラッフルズマリーナ



④ジョホール水道南端





- Uncertain about No.7 or No.8 buoy
- Missing No.9 buoy
- No. 10 is not on the map

②Tuas Second Linc(国境の橋)

Case 1

- The buoy is hidden by cargo ship

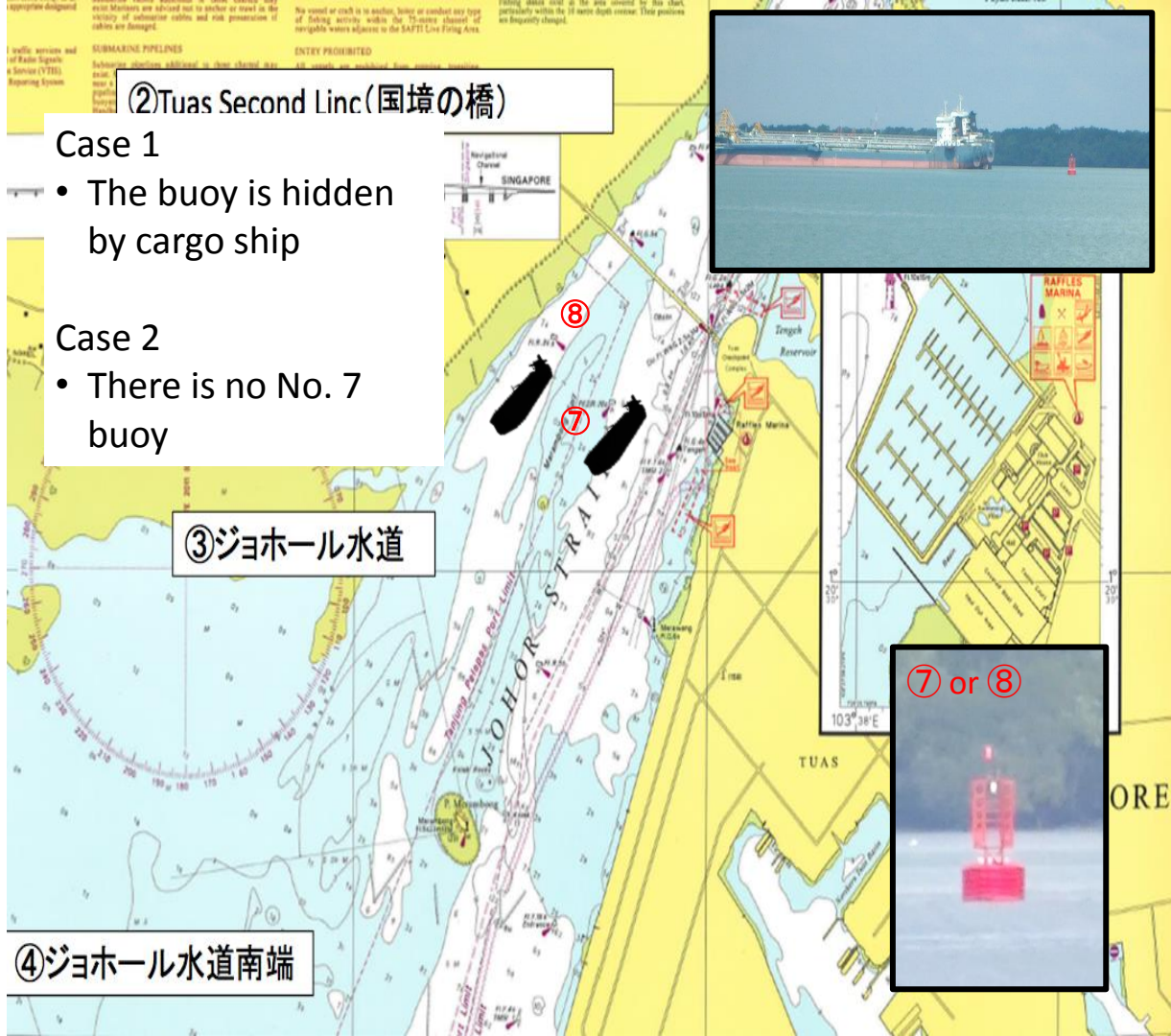
Case 2

- There is no No. 7 buoy



③ジョホール水道

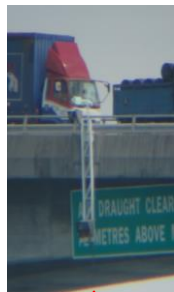
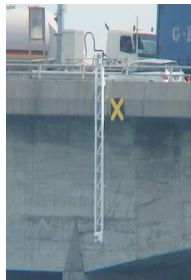
④ジョホール水道南端



Tuas Second Linc

Tuas Second Link





Conclusion

- Buoy doesn't separate the area
 - Cargo ship are not coming so often
 - Difficult to coming in (because of depth)
- Some buoys are
 - Not placed

Proposal

- Need of the real-time observation
 - Usable for environmental research



Proposal

- Need of the real-time observation
 - Usable for environmental research
- Put the buoy which shows the depth of the sea
 - Possibility of the increase in cargo ship

Thank You

