

Nationality of Thai People Seen from the Royal Family

13th Team Thailand Mizuki Takeda
Miyu Watanabe
Yui Saito
Mako Kitagata



The King's Role and Jobs

Role and Jobs

Top of Thailand

King

The diagram features a yellow crown icon at the top center containing the word "King". Below the crown are three ovals: a blue oval on the left labeled "Political", a pink oval in the center labeled "Army", and a green oval on the right labeled "Religion". Three arrows point upwards from these ovals towards the crown: a blue arrow from "Political", a pink arrow from "Army", and a green arrow from "Religion". In the top right corner, there is an orange scroll-like box containing the text "Top of Thailand".

Political

Army

Religion

Ceremony

What to Take Over

Thailand



Japan

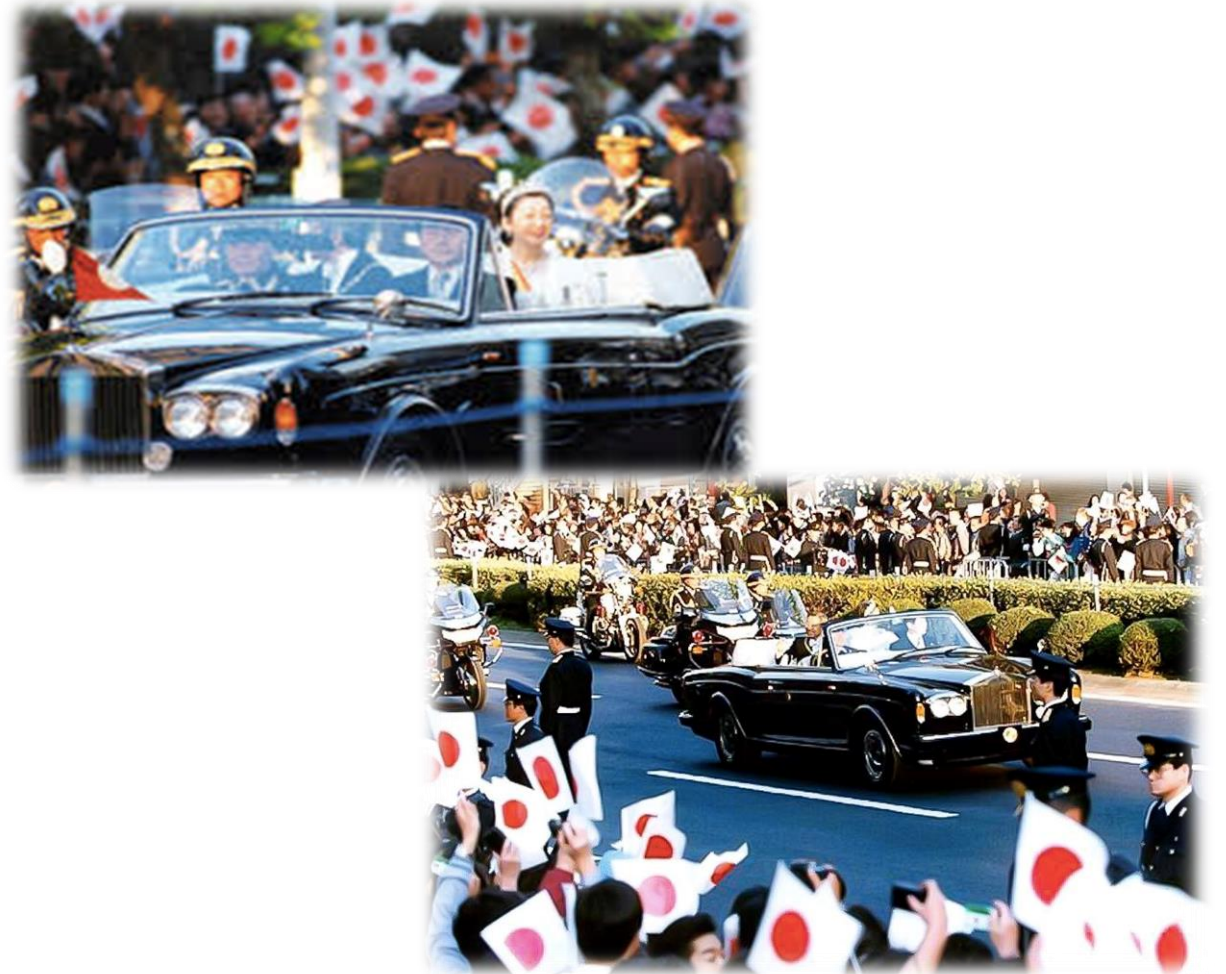


State of Parade

National wear yellow T-shirts, the King's symbol color and have a sense of unity.



Compared to Thailand, there is the distance between the people and the emperor.



Coronation



- Glittering decoration
- The King is particularly prominent
- Thai and foreign people concerned
- It looks Buddhist atmosphere



Enthronement Ceremony

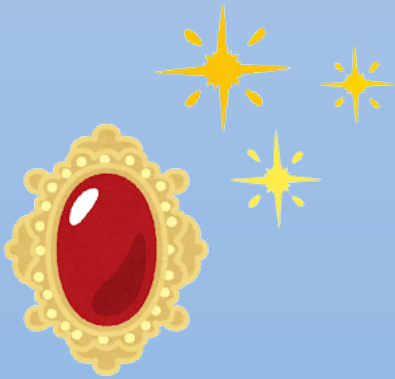


- Only Japanese people concerned
- Monotone and simple
- Similar looks, like the Emperor and the attendants

What is Nationality of Thailand?

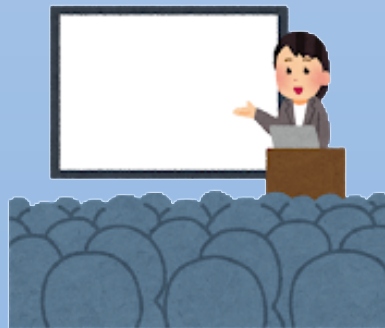
1

Flamboyant



2

Open



3

Religious



4

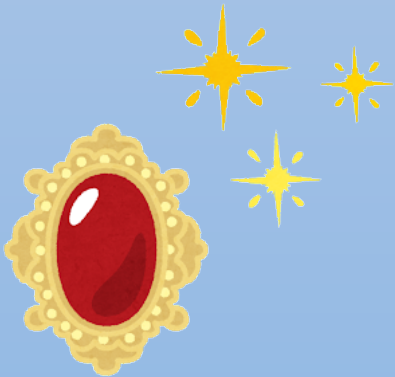
Patriotic



Nationality of Thailand We Considered

1

Flamboyant



2

Open



3

Religious



4

Patriotic



Flamboyant

~Favor Gorgeous~



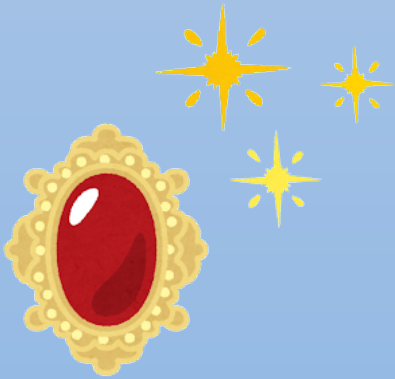


Pinsuwan benjarong

Nationality of Thailand We Considered

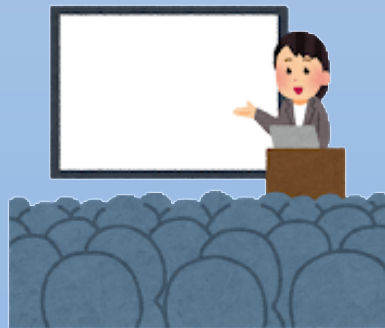
1

Flamboyant



2

Open



3

Religious



4

Patriotic



Open

~Information Disclosure~



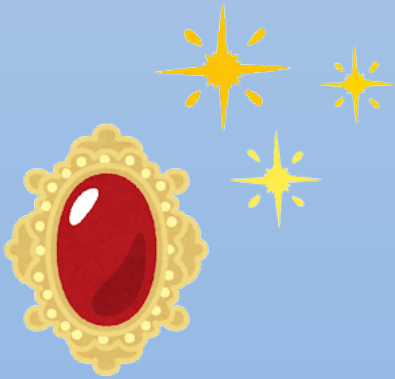
“A Culture that Respects Information Disclosure”



Nationality of Thailand We Considered

1

Flamboyant



2

Open



3

Religious



4

Patriotic



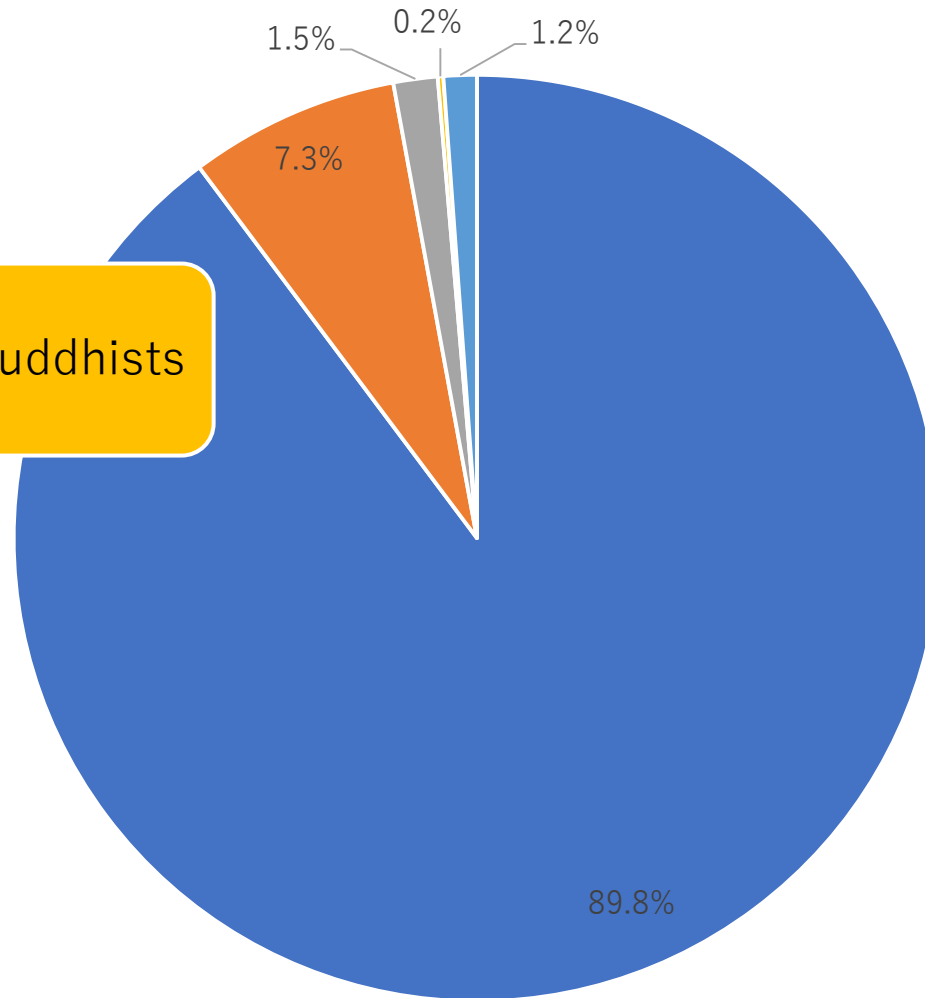
Religious

At first, about the people's faith...

~They strongly believe in religion~

Religion Ratio of Thailand

About 90% of people are Buddhists



- Buddhism
- Islam
- Christianity
- Hinduism
- Other

About 30,000 Temples



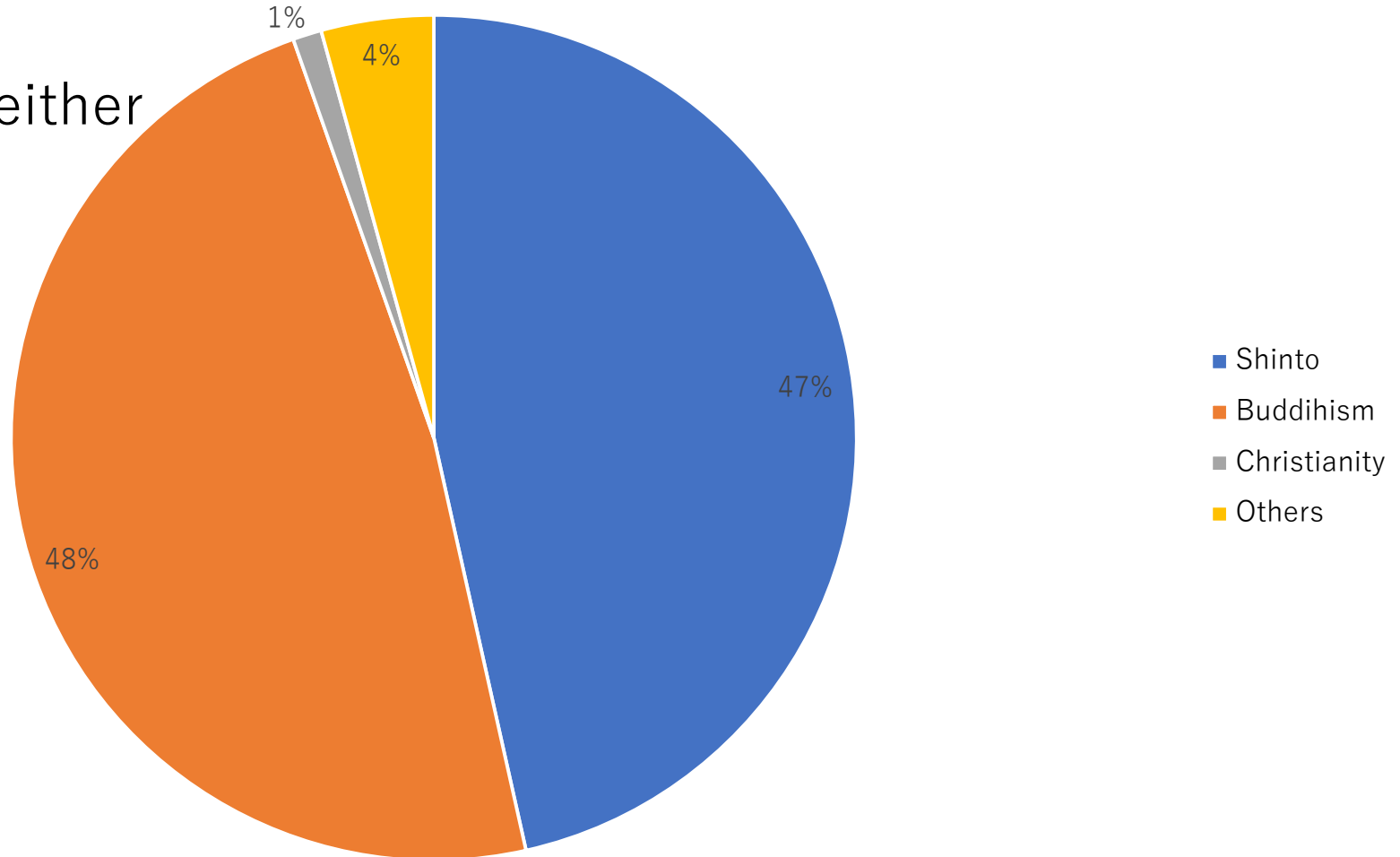
About 4,000,000 Monks



How about Japan...

Religion of Japan

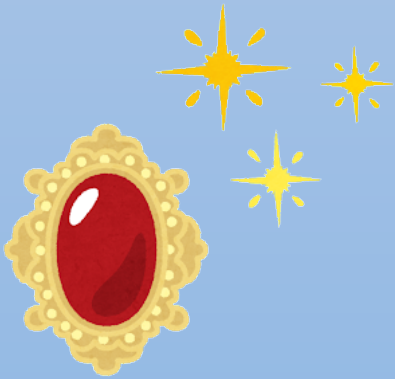
Most Japanese are either Buddhist or Shinto



Nationality of Thailand We Considered

1

Flamboyant



2

Open



3

Religious



4

Patriotic



Patriotic

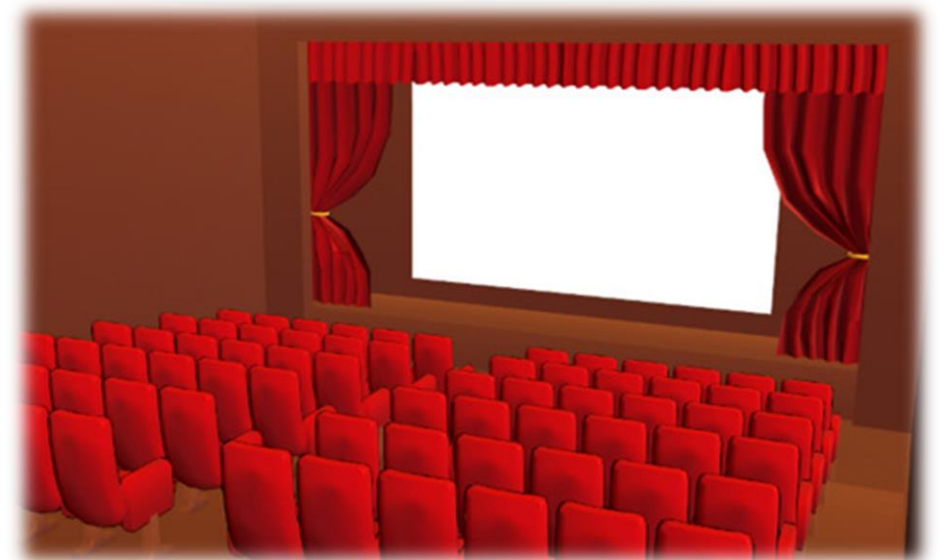
~love own country and the king~

National anthem is played

Place: park , public facilities

Time :8:00a.m. 6:00p.m.

Before seeing a movie







There are our guesses.

**Listen to the story,
feel it in Thailand !**

~Thank you for your listening~

